

WADSWORTH BOULEVARD WIDENING



PUBLIC OPEN HOUSE

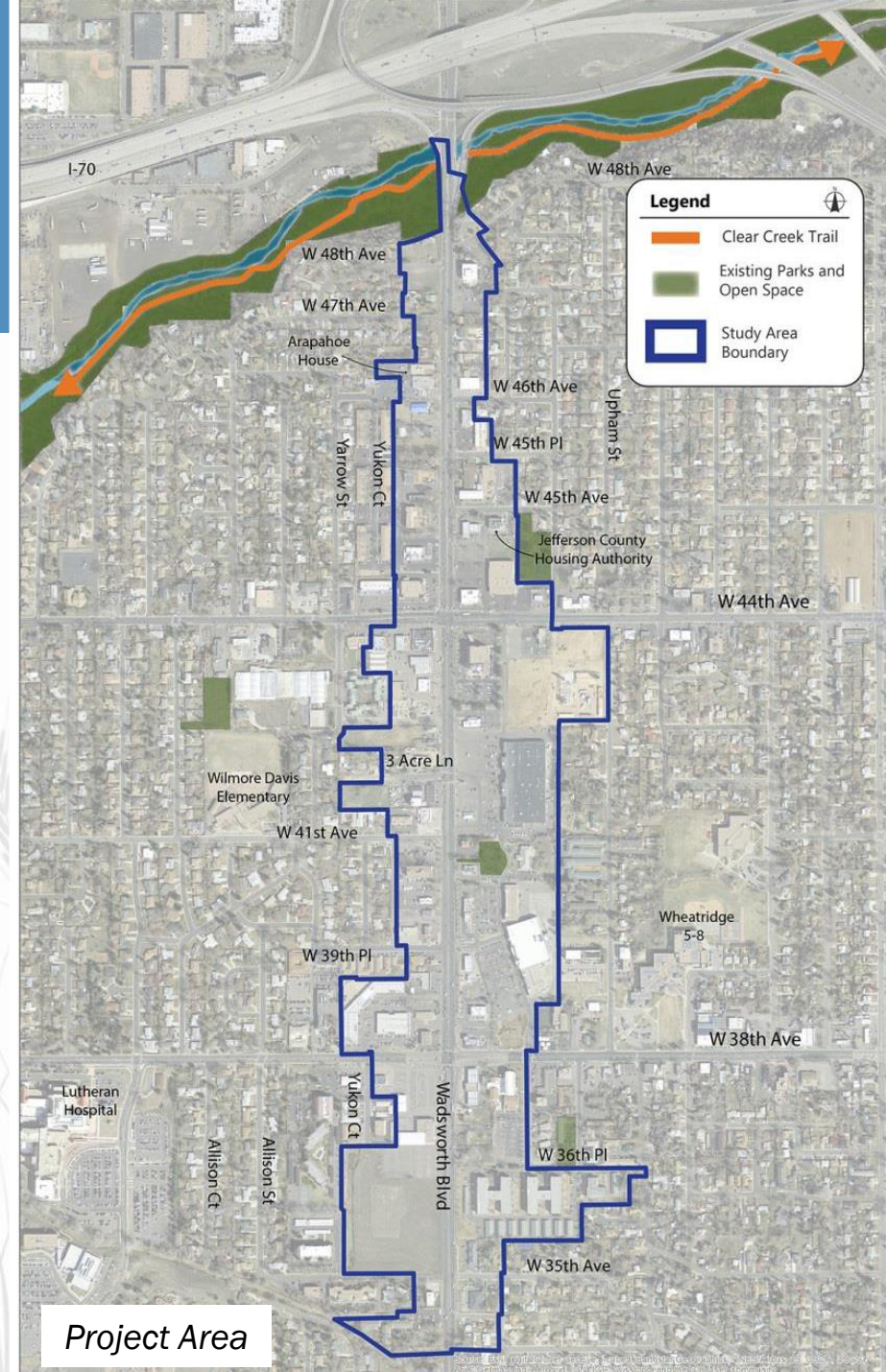
AUGUST 10, 2016

This meeting will introduce design refinements being considered for the intersections of 38th Avenue and 44th Avenue on Wadsworth Boulevard.



WHAT IS THE PROPOSED PROJECT?

- ✓ **Multi-modal improvements on Wadsworth from 35th Avenue to I-70**
- ✓ **In 2015, Wheat Ridge completed a Planning & Environmental Linkage (PEL) Study for the area and secured a grant for construction.**
- ✓ **Wheat Ridge and CDOT are now starting an Environmental Assessment (EA) process to secure agency and environmental approvals, develop a preliminary design, and identify property impacts.**
- ✓ **This effort will also determine access management improvements to improve safety.**
- ✓ **The 2015 PEL Study identified a Recommended Alternative which is the starting point for the EA.**



WHAT IS THE “PURPOSE AND NEED”?

The purpose of this project is to transform Wadsworth from 35th Avenue to I-70 into a multimodal facility that enhances regional mobility; provides local accessibility; and supports the vision of a livable, walkable mixed use corridor.

Identified needs

- ✓ Lack of adequate capacity
- ✓ Lack of access management
- ✓ Lack of multimodal access and accommodations
- ✓ Safety concerns



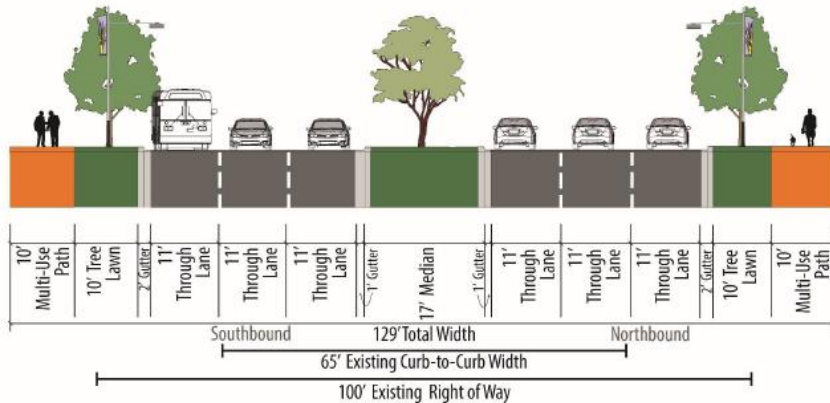
Southbound traffic on Wadsworth Blvd. backed up from 44th Ave.



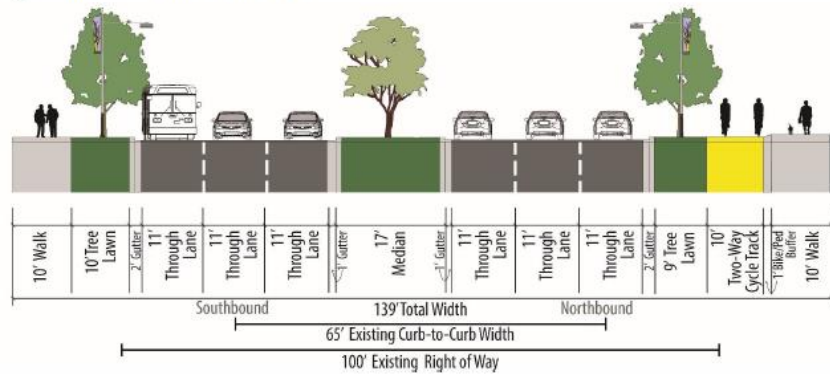
Lack of access management and sidewalks is a safety concern

WHAT DID THE 2015 STUDY RECOMMEND?

Typical Cross Section North of 44th Avenue



Typical Cross Section South of 44th Avenue

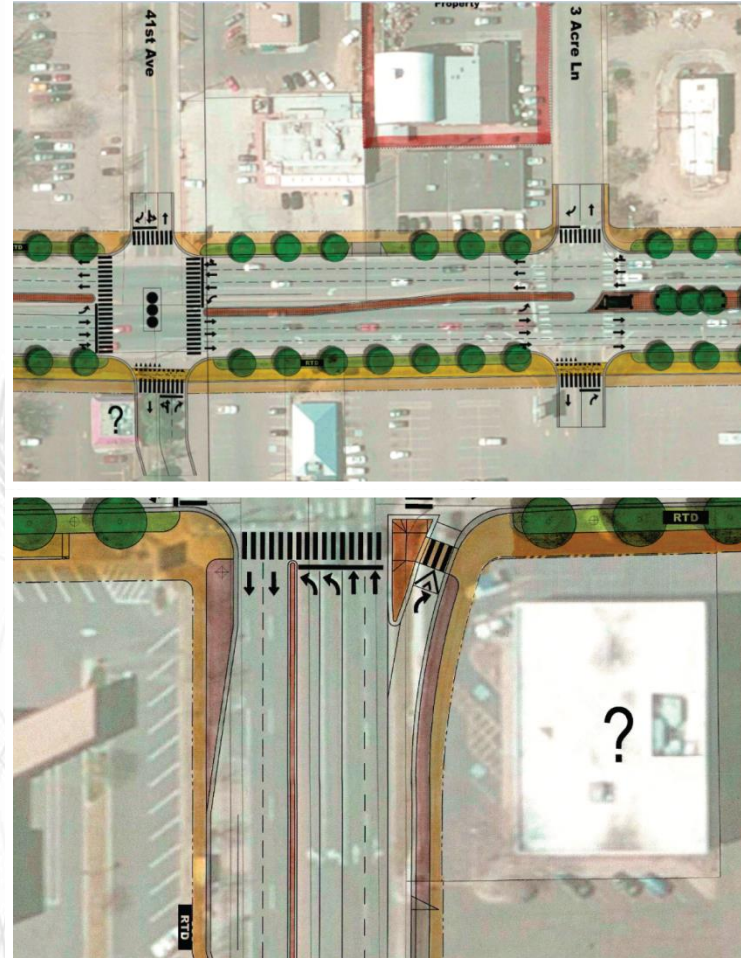


Typical cross sections from 2015 recommended alternative

- ✓ **Three lanes for vehicle travel in each direction**
- ✓ **10 foot detached sidewalks with tree lawn buffers**
- ✓ **Two-way cycle track (35th Avenue - 44th Avenue)**
- ✓ **Revised bus stop locations**
- ✓ **Double left turn lanes in all directions at 38th Avenue and 44th Avenue**
- ✓ **Raised medians**
- ✓ **Additional signalized intersections**

WHAT DESIGN ELEMENTS WILL BE REVIEWED?

- ✓ **Intersection layouts**
- ✓ **Bike/pedestrian geometry**
- ✓ **Signal locations and spacing**
- ✓ **Property impact reductions**
- ✓ **Median design details**
- ✓ **Water quality locations**
- ✓ **Transit stop relocations, additions, and/or eliminations**
- ✓ **Utility relocation needs**



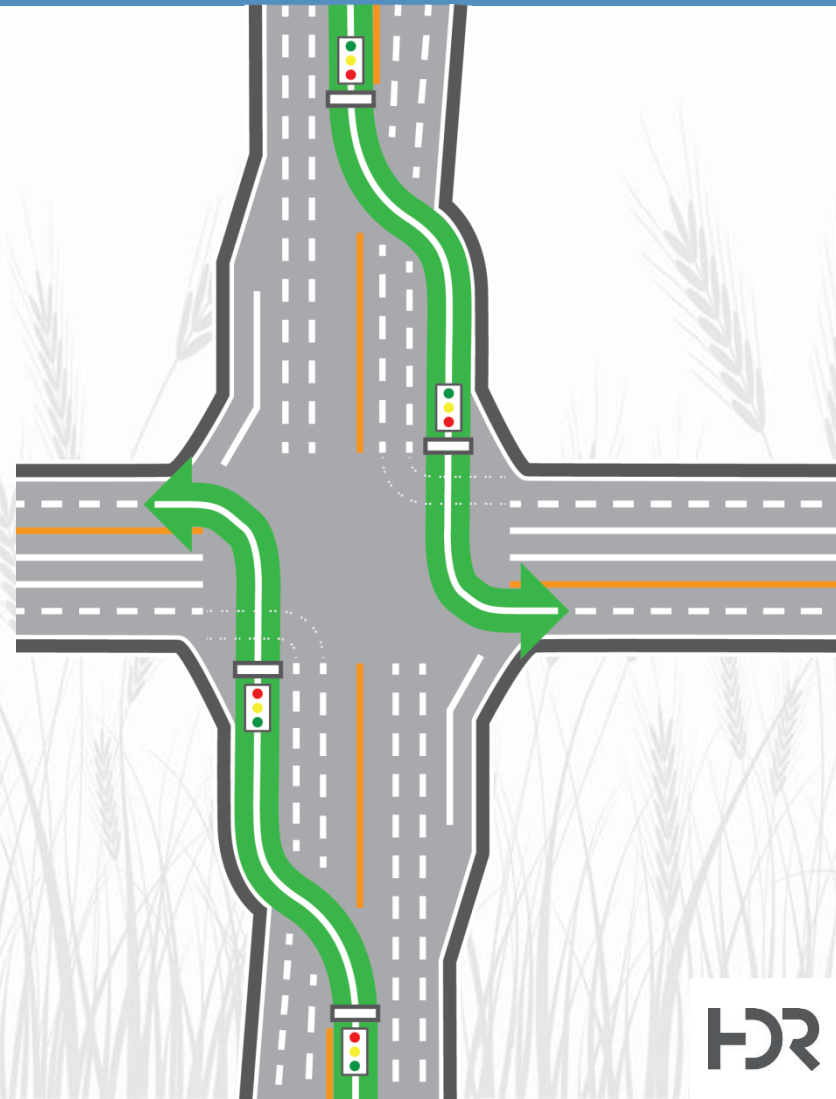
Examples of proposed intersection layout changes

WHAT NEW DESIGNS ARE BEING CONSIDERED?

Two Continuous Flow Intersections (CFIs) are being considered for the Wadsworth Boulevard project at 38th Avenue and 44th Avenue.

What are CFIs?

- ✓ **CFIs are an alternative design for signalized intersections**
- ✓ **They help increase the throughput of vehicles and reduce congestion by 30-70%**



HOW DO CFIs WORK?

POTENTIAL PROPERTY IMPACTS

Current roadway Right-of-Way (ROW) is approximately 100'. The 2015 Recommended Alternative will expand the ROW to:

- ✓ **140' from 35th to 44th**
- ✓ **130' from 44th to I-70**
- ✓ **Wider at 38th and 44th intersections**

Anticipated CFI ROW impacts will be similar to the PEL Recommended Alternative. Impacts and access may shift near the intersections of 38th Avenue and 44th Avenue.

The City is actively working to minimize property acquisitions where possible.



PLANNED PUBLIC INVOLVEMENT

Three public meetings

- ✓ Public Scoping: May 25, 2016
- ✓ Public Open House: Aug 10, 2016
- ✓ Public Hearing: Early 2017

Two rounds of “block-by-block” meetings with corridor property owners

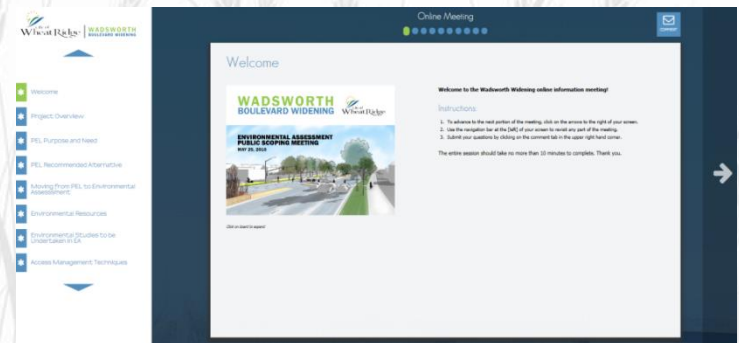
- ✓ Block-by-block meeting: July 15, 2016
- ✓ Block-by-block meeting: February 2017

Also:

- ✓ Quarterly newsletter articles
- ✓ Website updates at www.ci.wheatridge.co.us/Wadsworth
- ✓ As needed individual meetings with property owners, agencies, and task forces
- ✓ Periodic updates to project email subscribers

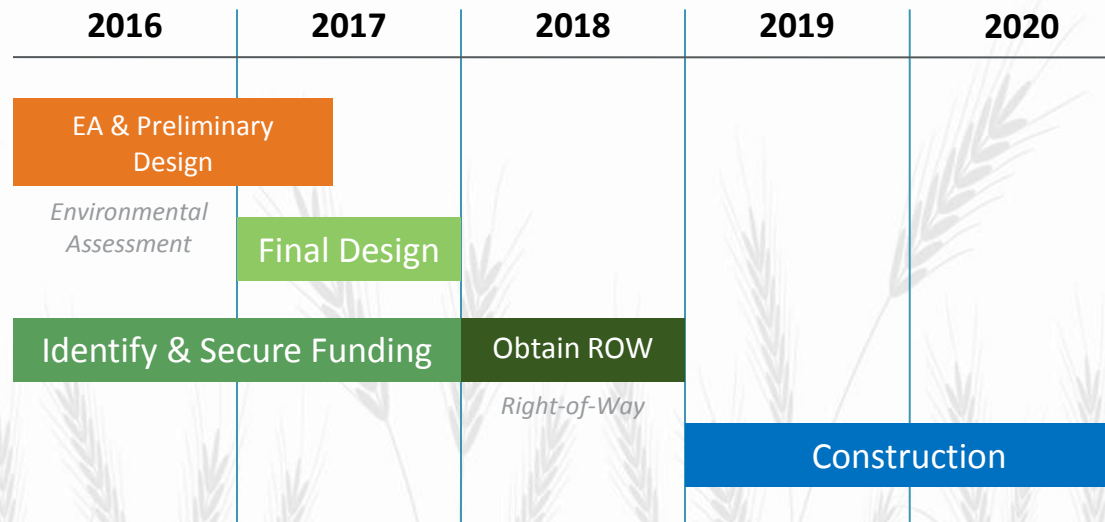


Wadsworth Public Meeting 2015



Online Public Meeting

WHAT ARE THE SCHEDULE AND NEXT STEPS?



- **Provide your input tonight**
- **Follow project updates at www.ci.wheatridge.co.us/Wadsworth**
- **Provide comments to Mark Westberg at (303) 235-2863 or mwestberg@ci.wheatridge.co.us**
- **Participate in block-by-block meetings in February 2017 and public hearing in mid 2017**