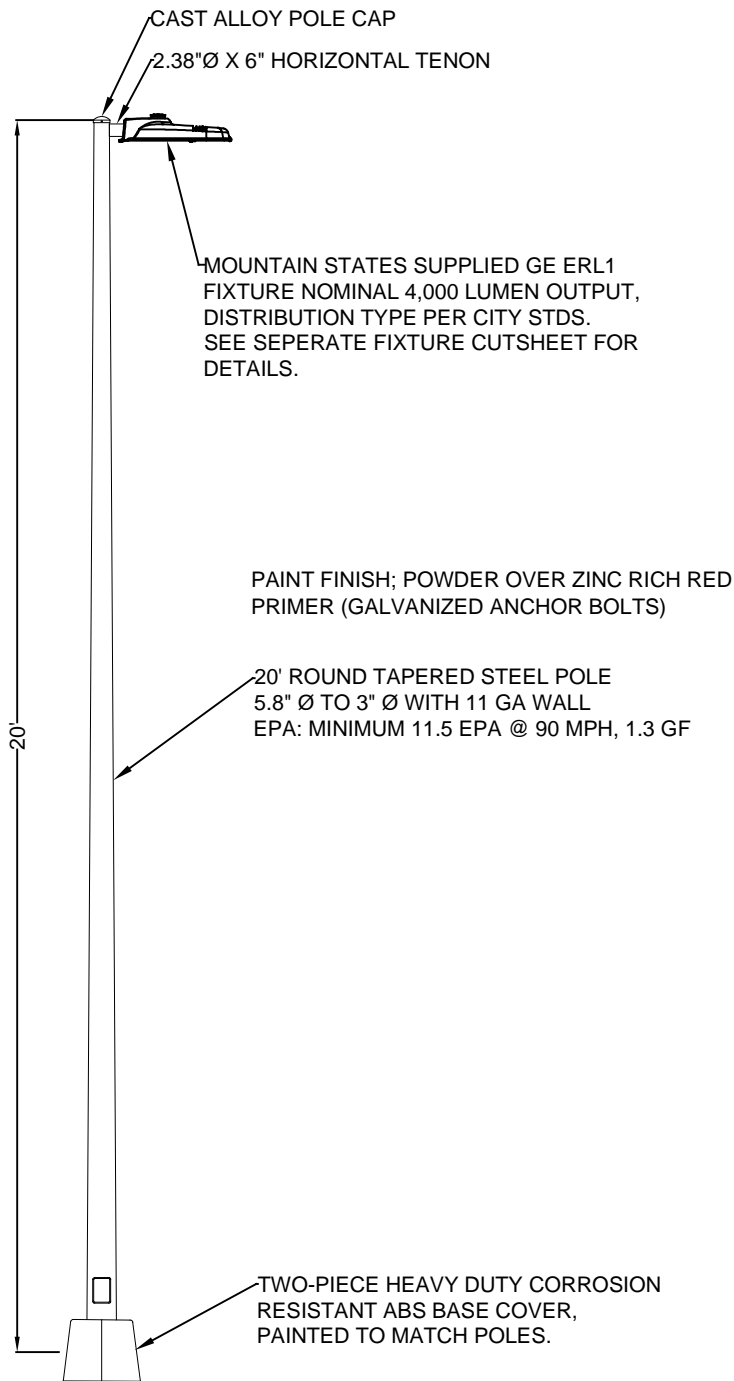
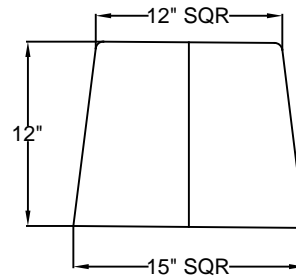


# PART #20RTS 5.8/3-6" SGL HOR MAST-DABC-HH-AB-BRC-BLACK

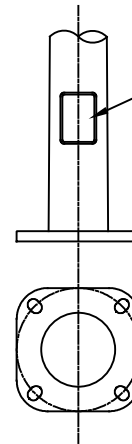


## BASE COVER DETAIL



2 PIECE BASE COVER IS  
MADE OF ABS PLASTIC WITH  
A  $\frac{3}{8}$ " WALL THICKNESS AND  
CAN BE PAINTED TO MATCH  
POLE

## POLE BASE DETAIL

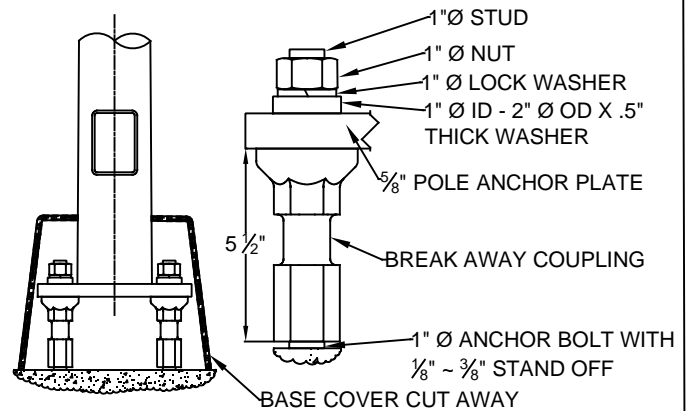


3" X 5" HAND HOLE IS CENTERED 12"  
ABOVE BOTTOM OF POLE. INCLUDES  
WEATHERPROOF COVER WITH  
VANDAL RESISTANT FASTENERS

ANCHOR PLATE IS  $\frac{5}{8}$ " X 10.6" X 10.6"  
STEEL WITH  $\frac{1}{8}$ " X  $2\frac{1}{4}$ " HOLES FOR 1"Ø  
ANCHOR BOLTS ON 12"Ø BOLT CIRCLE

4 BOLTS AT 90 DEGREES 1"Ø X 36" LONG  
X 4" HOOK BOLTS TO HAVE A  $1\frac{3}{8}$ " to  $1\frac{5}{8}$ "  
BOLT PROJECTION OUT OF THE  
CONCRETE. (KEEP THREADS CLEAN)

## BREAK AWAY BASE DETAIL



### REVISIONS:

**MOUNTAIN STATES LIGHTING**

P.O. Box 449  
Conifer, CO 80433 Phone  
303-838-4430 Fax  
801-605-9058

### JOB NAME:

Wheat Ridge 20' Residential Tapered Pole/GE ERL1/BREAKAWAY

### SCALE:

NTS

### DATE:

6/22/20

### DRAWN BY:

Ry

### DRAWING NUMBER:

20RTS-7.2/3GE-BA COUP

### REP:

Mountain States

### QUOTE #:

### DIST.:

WHEAT RIDGE 20' ROUND TAPERED STEEL  
POLE WITH GE ERL1, DEEP ABS BASE  
COVER, AND BREAK AWAY COUPLINGS

DECORATIVE POLE STANDARDS BY MOUNTAIN STATES LIGHTING