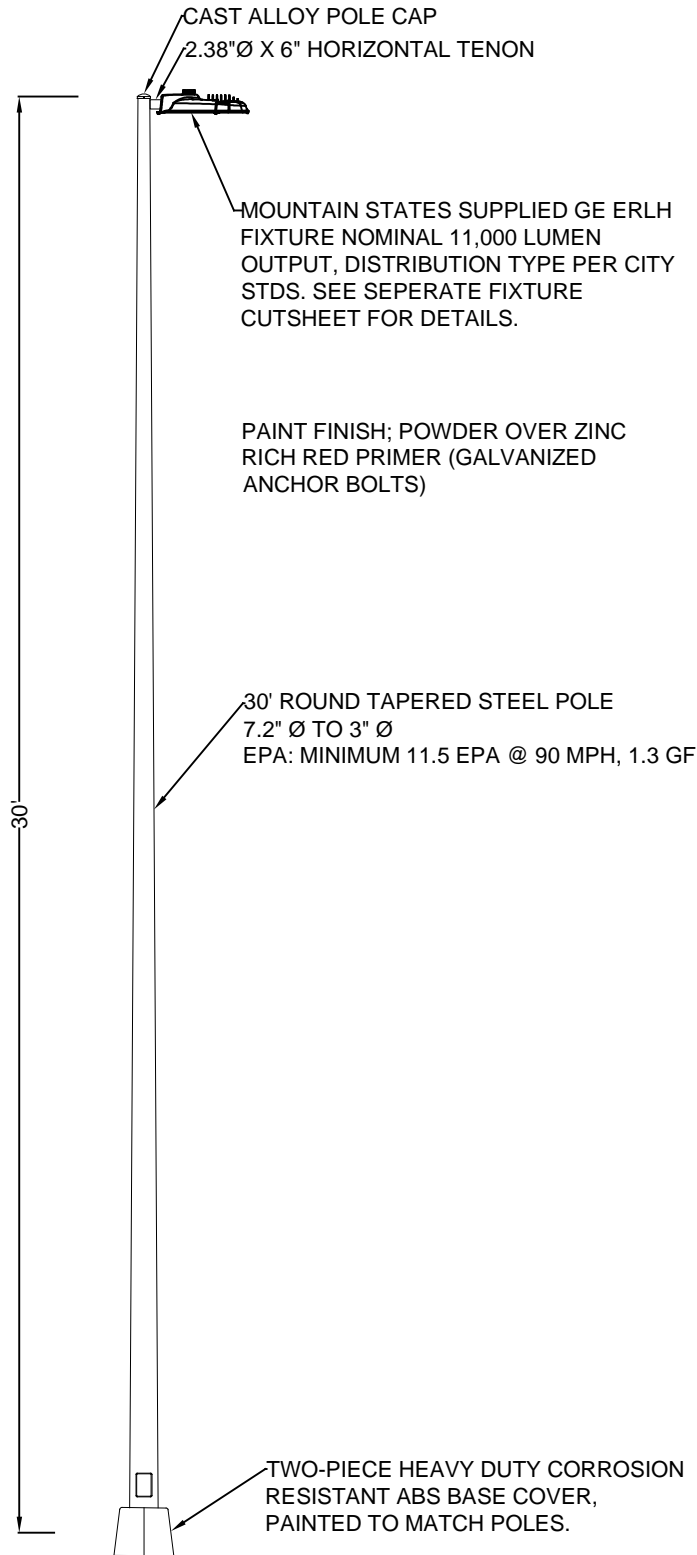
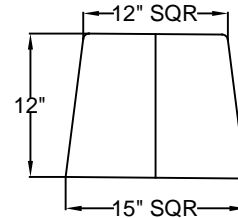


PART #30RTS 7.2/3-6" SGL HOR MAST-DABC-HH-AB-BRC-BLACK

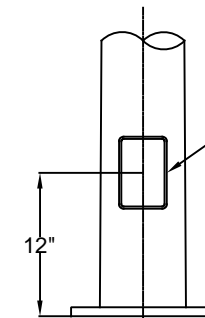


BASE COVER DETAIL

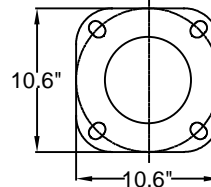


2 PIECE BASE COVER IS MADE
OF ABS PLASTIC WITH A $\frac{3}{8}$ "
WALL THICKNESS AND CAN BE
PAINTED TO MATCH POLE

POLE BASE DETAIL



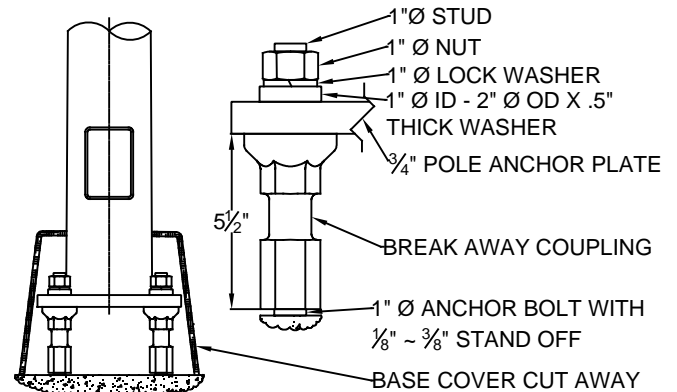
4" X 6" HAND HOLE IS CENTERED 12"
ABOVE BOTTOM OF POLE. INCLUDES
WEATHERPROOF COVER WITH
VANDAL RESISTANT FASTENERS



ANCHOR PLATE IS $\frac{3}{4}$ " X 10.6" X 10.6"
STEEL WITH $1\frac{1}{8}$ " X $1\frac{1}{2}$ " HOLES FOR 1"Ø
ANCHOR BOLTS ON 12"Ø BOLT CIRCLE

4 BOLTS AT 90 DEGREES 1"Ø X 36" LONG
X 4" HOOK BOLTS TO HAVE A $1\frac{3}{8}$ " to $1\frac{1}{2}$ "
BOLT PROJECTION OUT OF THE
CONCRETE. (KEEP THREADS CLEAN)

BREAK AWAY BASE DETAIL



REVISIONS: PP-Lst Chg 9-4-19

MOUNTAIN STATES LIGHTING

P.O. Box 449
Conifer, CO 80433 Phone
303-838-4430 Fax
801-605-9058

JOB NAME:

Wheat Ridge 30' Collector Tapered Pole/GE ERLH/BREAKAWAY

SCALE:

NTS

DATE:

8/28/18

DRAWN BY:

Ry

DRAWING NUMBER:

30RTS-7.2/3GE-BA COUP

REP:

Mountain States

QUOTE #:

DIST.:

**WHEAT RIDGE 30' ROUND TAPERED STEEL POLE
WITH GE ERLH, DEEP ABS BASE COVER, AND
BREAK AWAY COUPLINGS**