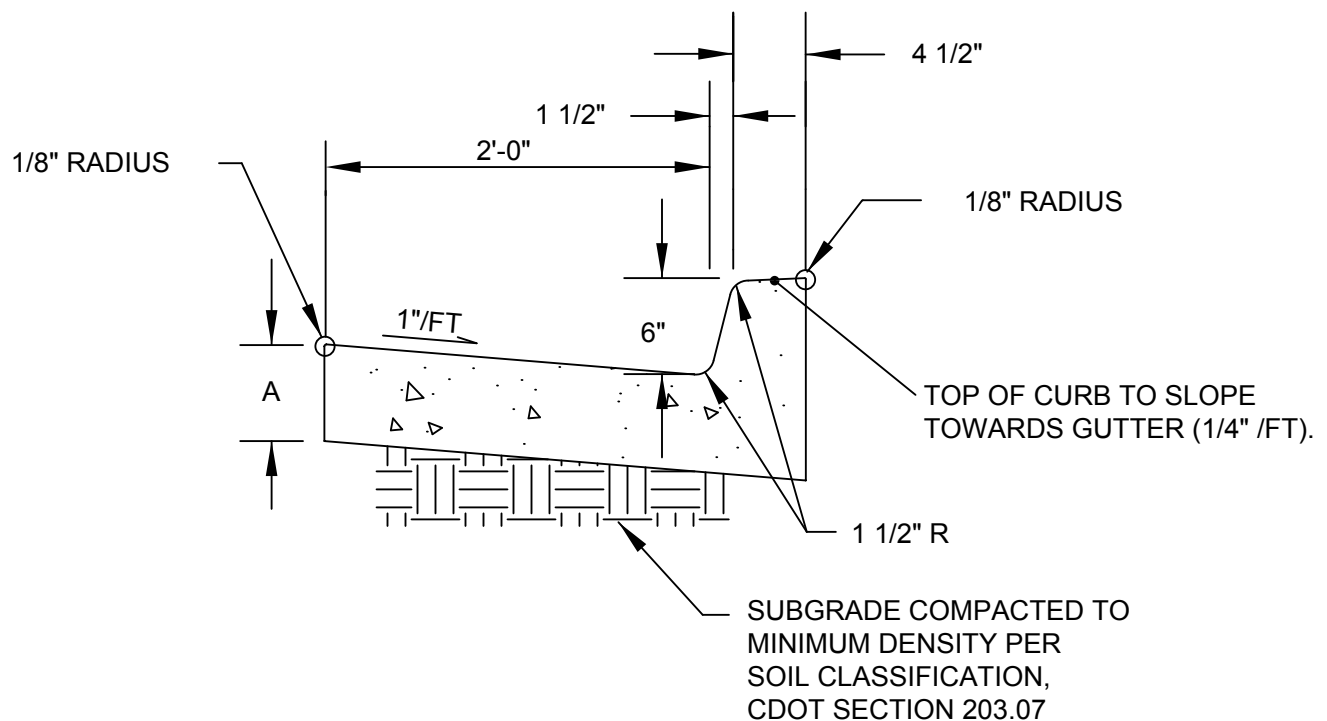


NOTE: CONTRACTION JOINTS REQUIRED  
AT MAXIMUM 10' SPACING,  
MINIMUM 5' SPACING.

MEASUREMENT: LINEAR FOOT (LF)  
PAYMENT: BY CG TYPE

CDOT SEC	WR STD	A
IIB	CG2	6"
NA	CG2A	8"
NA	CG2B	10"



## VERTICAL CURB & GUTTER (CG) SECTION

SCALE: 1" = 1'-0"



**CITY OF WHEAT RIDGE**

DEPT. OF PUBLIC WORKS  
ENGINEERING DIVISION

APPROVED BY: SNN 06/07

C-D01 VCG

VERTICAL CURB AND  
GUTTER (CG) SECTION

DETAIL  
CODE

**C**