

What is the Wheat Ridge Stormwater Program?



Many large metropolitan areas throughout the United States are required to operate their storm sewer systems under a State permit. Under the Federal [Clean Water Act](#), the National Pollutant Discharge Elimination System (NPDES) Permit require these cities to control the amount and the quality of the untreated waste being dumped into surface waterways through storm sewers. In 1999, the Environmental Protection Agency (EPA) enacted the **Phase II Stormwater Rule** that requires small-sized cities, like the City of

Wheat Ridge, to also obtain a permit and to control the untreated stormwater that enters into the creeks and lakes through storm sewers.

The **Phase II Stormwater Rule**:

- Is federally-mandated and unfunded.
- Requires the City of Wheat Ridge to obtain permit coverage and meet all requirements for stormwater discharges to State receiving waters.
- Is administered nationwide by the EPA and by the Colorado Department of Public Health and Environment ([CDPHE](#)), within Colorado
- Has financial penalties for non-compliance - up to \$25,000 per day if it is determined there is criminal intent.

Stormwater Management Plan

In March 2003, the City of Wheat Ridge was required to develop its first Stormwater Management Plan in the form of a Phase II Permit Application, and submit it to the State of Colorado. On August 10th, 2004, Wheat Ridge's Phase II Permit Application was approved. Click here to view or download Wheat Ridge's Final Stormwater Permit Application [WHEAT RIDGE PHASE II PERMIT FINAL](#)

Minimum Control Measures

The current City Phase II Permit requires that six Minimum Control Measures (MCM) be continuously implemented between March 2003 and March 2008. The City of Wheat Ridge must meet these MCM's in order to report program success to the State. According to the terms of the approved Phase II Permit, the City is required to meet certain MCM deadlines through tasks known as measurable goals. A summary of each MCM is provided below.

MCM #1: Public Education and Outreach

- Distribute educational materials or conduct outreach activities about storm water discharge impacts on local water bodies.
- Inform businesses and the general public about the impacts of illegal discharge and improper waste disposal.

MCM #2: Public Participation/Involvement

- Place notices in local newspapers informing the public about the opportunities for the public to participate in program development and implementation.

MCM #3: Illicit Discharge Detection and Elimination

- Decrease amount of illegal dumping and other unauthorized discharges from the MS4.
- Create outfall system map and plan to detect and remove discharges.
- Create a review process and City ordinance for regulation and enforcement.

MCM #4: Construction Site Stormwater Runoff Control

- Reduce the amount of stormwater pollution from construction sites. (sediment, building materials, oil, etc.)
- Create a review process and City ordinance for regulation and enforcement.
- Require, review, inspect, and enforce proper management practices and material disposal on construction sites.

MCM #5: Post-Construction Stormwater Management

- Decrease the amount of pollutants and peak quantity of stormwater leaving newly developed areas.
- Create a review process and City ordinance for regulation and enforcement.
- Require, review, inspect, and enforce proper methods for detaining/improving quality of water for sites.

MCM #6: Pollution Prevention/Good Housekeeping for Municipal Operations

- Reduce pollutants from municipal parking lots, streets, open spaces, etc. and operations facilities. (i.e. salting/sanding/fertilizing)
- Inventory all City storm drainage facilities and outfalls.
- Develop program to both complete goal and train employees.

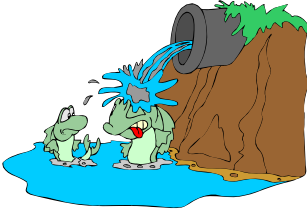
Schedule

City staff and consultants have been working on the permit application and program development since early 2003. The permit application was submitted in March 2003, and after several revisions, the permit was finalized and approved in August 2004. There is a 5-year program implementation schedule and all programs described in the permit application must be fully implemented by March 9, 2008. The following Permit Timeline Summary provides a one-stop look at the City's timeline to meet each measurable goal by March 2008 [WHEAT RIDGE PHASE II PERMIT TIMELINE SUMMARY](#)

Program Costs

Implementing the MCM measurable goals identified in the City Phase II Permit will be expensive. These tasks require much staff time and help from outside of the office, in the form of Consultants or other City agencies that are involved with the Phase II process. In staff time, direct expenses, and outside consultant help, implementation of the Phase II Permit is estimated to cost \$300,000 to \$350,000 per year. The Federal government does not provide any funding for the Phase II Stormwater program. Therefore, the City must fund the program on its own.

In an effort to gain efficiencies and reduce overall program costs for development, implementation and administration, City staff have been coordinating MCM measurable goal efforts with other Denver metro cities (e.g., City of Arvada, City of Golden, City of Northglenn, among others). This has helped to avoid a "recreation of the wheel" with many MCM categories, which can be borrowed and shared with similar Cities.



Wheat Ridge is a member of the Northern Colorado Alliance of Stormwater Coordinators (NCASC), a select group of Phase II MS4 communities whose representatives are responsible for Stormwater Program Management. The NCASC acts as a forum to:

- Aide in the development of stormwater regulatory programs.
- Collectively coordinate compliance within the member communities.
- Enable the exchange of information regarding Stormwater regulations.
- Share and leverage resources.
- Serve as a voice for its members when representation at regulatory hearings or other meetings if necessary or desired.

Wheat Ridge Phase II MS4 Permit:

[WHEAT RIDGE PHASE II PERMIT FINAL](#)

Wheat Ridge Phase II Permit Annual Reports

[ANNUAL REPORTS](#)

Links to CDPHE Permits- !Attention Land Developers and Contractors!

[Colorado Department of Public Health & Environment, Water Quality Control Division](#)

Construction Forms, Applications and Permits

- [Discharges Associated with Commercial Washing of Outdoor Structures Rationale and Requirements](#)
- [Colorado Stormwater Program Fact Sheet](#)
- [Construction Dewatering Discharge FAQs](#)
- [Construction Dewatering Discharge Permit \(COG-070000\)](#)
- [Construction Dewatering Discharge Application \(COG-070000\)](#)
- [Construction Dewatering Discharge Application Instructions](#)
- [Construction Stormwater Inactivation Form](#)
- [Contact Change Form](#)
- [Stormwater Construction Fact Sheet](#)
- [Stormwater Construction Reassignment Form](#)
- [Stormwater Discharge Construction Application Instruction and SWMP Guidance](#)
- [Stormwater Discharge – with Construction Activities Permit \(COR-030000\)](#)
- [Stormwater Discharge – with Construction Application \(COR-030000\)](#)

Links to EPA Environmental Regulatory web sites:

[Environmental Protection Agency](#)

[EPA: Pretreatment Program](#)

[EPA: Storm Water Program](#)

[EPA: Region 8 - Mountains & Plains](#)

[Safe Drinking Water Act](#)