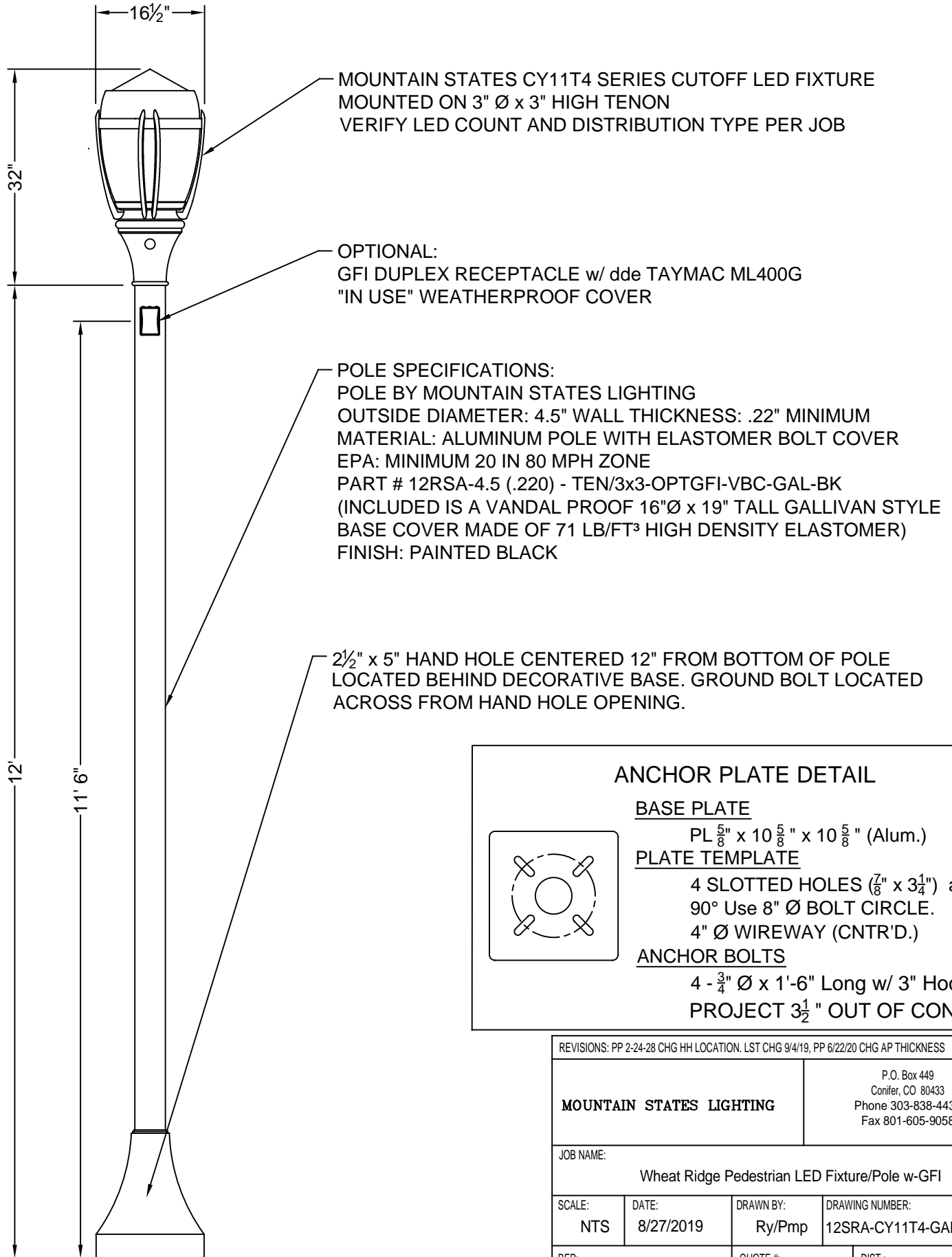


MSL PART # 12SRA-4.5(220)TEN.3"X3"-OPT/GFI-VBC-GAL-BK /CY11T4-VS3AR
(ADD OR DEL "OPT/GFI" ABOVE DEPENDING IF YOU WANT THAT OPTION)



ANCHOR PLATE DETAIL

BASE PLATE

PL $\frac{5}{8}$ " x 10 $\frac{5}{8}$ " x 10 $\frac{5}{8}$ " (Alum.)

PLATE TEMPLATE

4 SLOTTED HOLES ($\frac{7}{8}$ " x $3\frac{1}{4}$ ") at
90° Use 8" Ø BOLT CIRCLE.
4" Ø WIREWAY (CNTR'D.)

ANCHOR BOLTS

4 - $\frac{3}{4}$ " Ø x 1'-6" Long w/ 3" Hook
PROJECT $3\frac{1}{2}$ " OUT OF CONC.

REVISIONS: PP 2-24-28 CHG HH LOCATION. LST CHG 9/4/19, PP 6/22/20 CHG AP THICKNESS

MOUNTAIN STATES LIGHTING

P.O. Box 449
Conifer, CO 80433
Phone 303-838-4430
Fax 801-605-9058

JOB NAME:

Wheat Ridge Pedestrian LED Fixture/Pole w-GFI

SCALE:

NTS

DATE:

8/27/2019

DRAWN BY:

Ry/Pmp

DRAWING NUMBER:

12SRA-CY11T4-GAL-2019

REP:

Mountain States

QUOTE #:

DIST.: