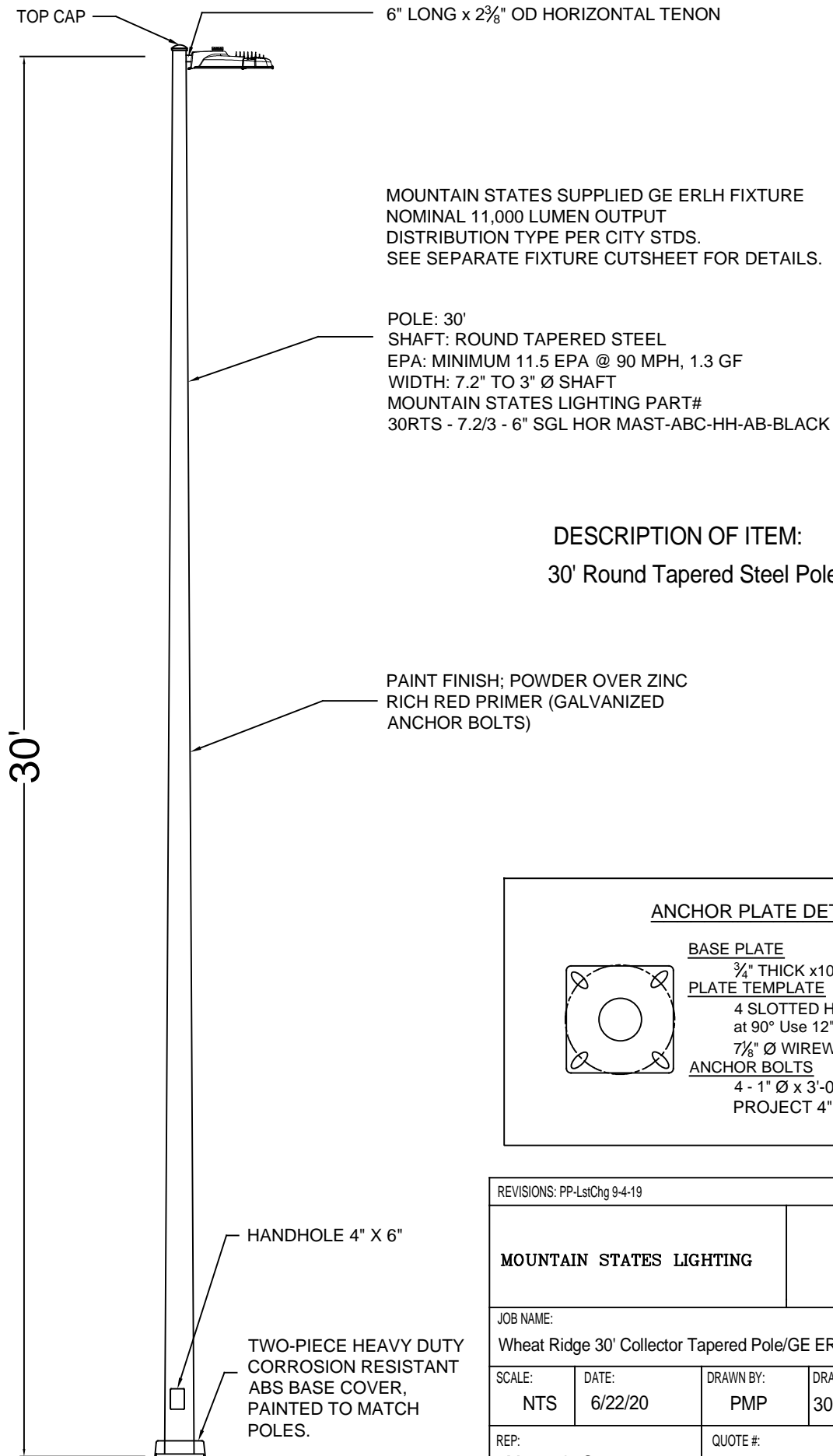


MANUFACTURER: MOUNTAIN STATES LIGHTING  
PART # 30RTS 7.2/3-6" SGL HOR MAST-ABC-HH-AB-BK



DESCRIPTION OF ITEM:  
30' Round Tapered Steel Pole

ANCHOR PLATE DETAIL

BASE PLATE

3/4" THICK x10.6" x 10.6" (Steel)

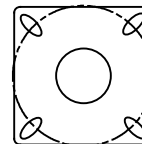
PLATE TEMPLATE

4 SLOTTED HOLES (1 1/8" x 2 1/4")  
at 90° Use 12" Ø BOLT CIRCLE.

7/8" Ø WIREWAY (CNTR'D.)

ANCHOR BOLTS

4 - 1" Ø x 3'-0" Long w/ 4" Hook  
PROJECT 4" OUT OF CONC.



REVISIONS: PP-LstChg 9-4-19

**MOUNTAIN STATES LIGHTING**

P.O. Box 449  
Conifer, CO 80433  
Phone 303-838-4430  
Fax 801-605-9058

JOB NAME:

Wheat Ridge 30' Collector Tapered Pole/GE ERLH

SCALE:

NTS

DATE:

6/22/20

DRAWN BY:

PMP

DRAWING NUMBER:

30RTS-7.2/3GE-GEN 2020

REP:

Mountain States

QUOTE #:

DIST.: